

A Journal of the Gesellschaft Deutscher Chemiker

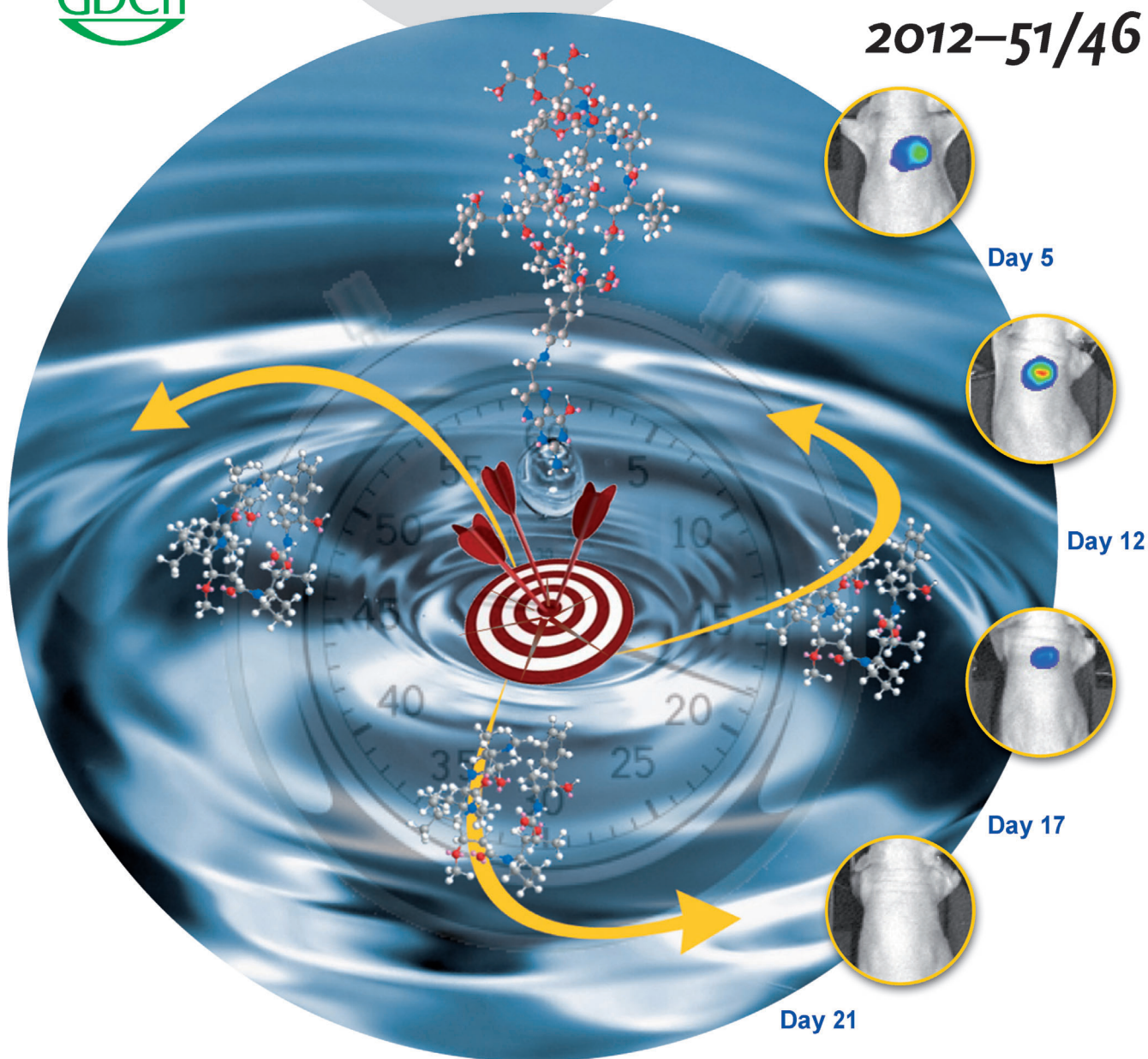
# Angewandte Chemie

International Edition



www.angewandte.org

2012–51/46



## A galactoside prodrug ...

... has been designed that can be selectively activated by lysosomal  $\beta$ -galactosidase located inside cancer cells expressing a specific tumor-associated receptor. In their Communication on page 11606 ff. S. Papot and co-workers show that this efficient enzymatic process triggers a potent cytotoxic effect, releasing the potent antimitotic agent MMAE and allowing the destruction of both receptor-positive and surrounding receptor-negative tumor cells.

 WILEY-VCH